

4.2V-60V Vin, 2A, High Efficiency Step-down DCDC Converter with Programmable Frequency

- A 5 4=7
- 9
- 75 8,
- 997 4
- A877
- / 0
- 877 4
- 4
- 877 85
-
-
-
- 4 / 0
-
- 4 4
- 4
-

A

5

9

5

5

9797

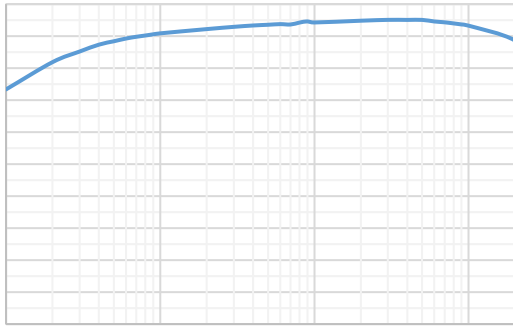
A

9=99

8 5



			: 5	
			77	
		73	9	
		$ \begin{array}{cccc} & 3 & & 3 & 4 \\ & 3 & & 4 & 3 \\ 977 & & & & \end{array} $	877	
	4	4	4	997
			75 9	75 757



95

3

: 5

3 9

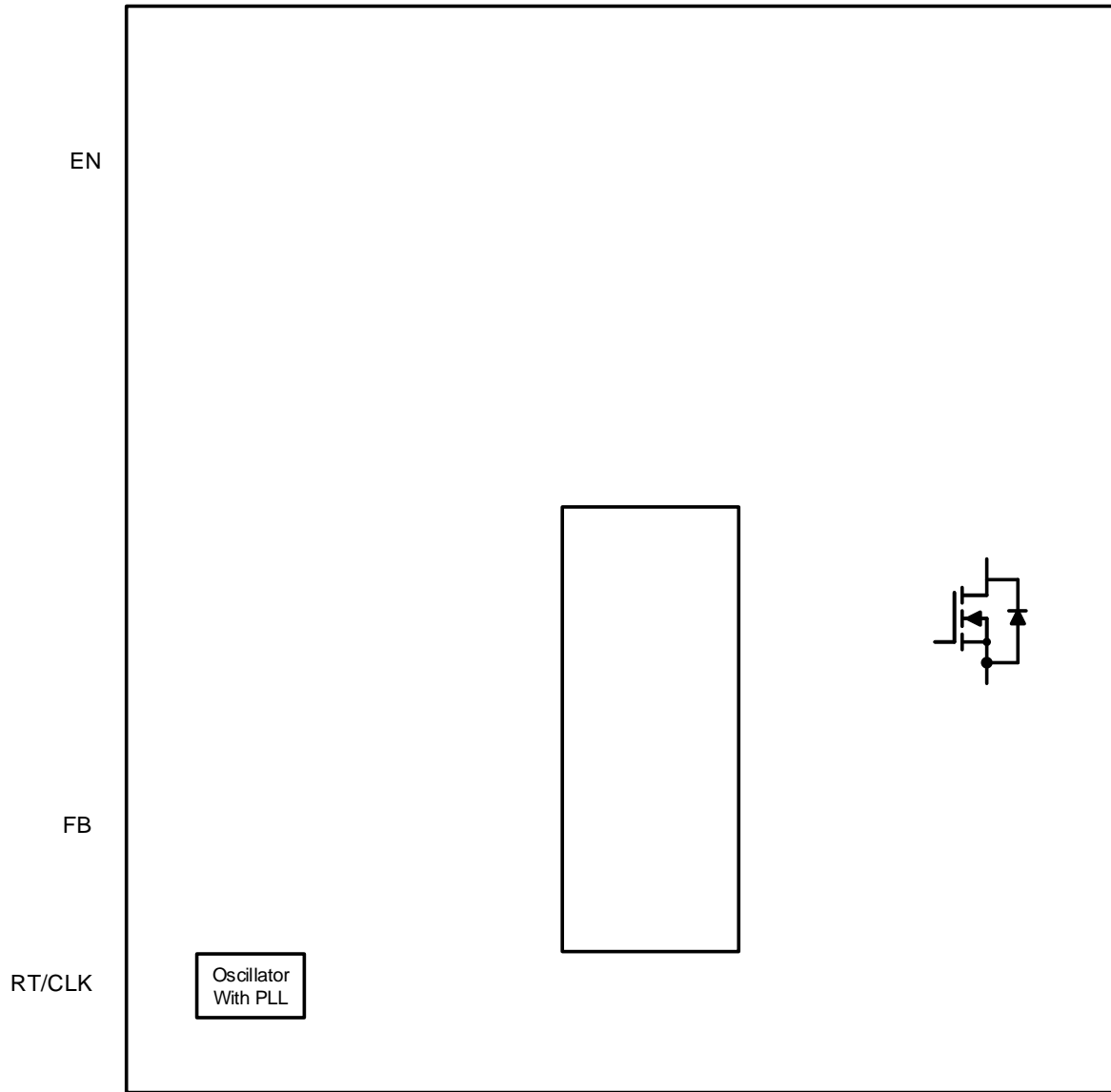
5

3 9 3 : 5

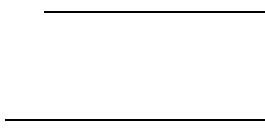
5

=5

5

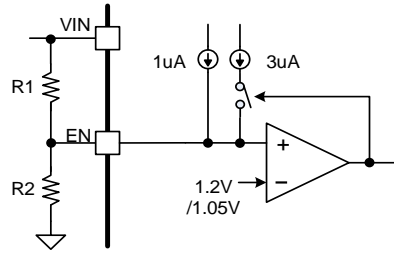


5



/80

/90



5

-
-

9=99

75

±8,

5

8,

3

5

:

5

5

3

5

5

3

/: 0

-
-

5

5

9=99

6

3

5

3

6

877

859

5

6

6

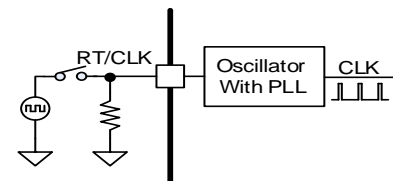
75

5

6

875

5



875

3

3

877

859

==

6

5

6

9 3

75

3

7

5

6

3

875

3

5

5

3

5

5

5

9797

8

5



A
A
A
A



=
 5 = 875 5
 =
 A
 •
 75

Table 1. R₅, R₆ Value for Common Output Voltage (Room Temperature)

95	985	875
: 5	: 85	875
	: 5	875
89	8 :	875
9	9	875
: =	9	875
	=7	875

5 3
)
 5 3 5 877 4 3
 5 3 5 77
 5
 6
 5
 3 5
 A
 •

Table 2. R_{FSW} Value for Common Switching Frequencies (Room Temperature)



4 4

875

_____ /870

-
-
-
-
-

4 4

4

5

3

88

5

_____ â Ç•6Sô+Ü"y5

/880

-
-
-
-
-
-

/ 0
/ 0

3

5

3

3

5

5 5 3 5

=74 3 5 9=995

3 :=7 48: 4 5 :=7 48: 4 75 : 5

4 5 5 5

3 3 5 4 5 5 4 5

3 3 5 5 8

:=7 48: 4 75= 5 977 5 8 3

5 3

4 4 3 5

75 0 4 5 3 5 5 5 5 5

17=7: 0 5

8 5

91 3 A

5 3 5

8 7, 5

8 0



9 3 : 5 3

